

FLOW METERING Area Velocity Flowmeters

Greyline Stingray 2.0 Portable Area Velocity Meters

- Measure level and velocity in sewers, streams and open channels
- Ultrasonic—no flume or weir required
- Portable, lightweight, watertight IP67 enclosure
- Huge 130,000-point datalogging capacity

Greyline's Stingray 2.0 is the solution to your portable open channel flow measurement problems. The non-fouling sensor requires only 1" of water level to operate. Housed in a waterproof enclosure, the Stingray 2.0 can be deployed just about anywhere and the 130,000-point data capacity will allow you to collect all the information you need.

Easy to operate

No calibration is required. Just install the sensor at the bottom of the pipe or channel and the Stingray 2.0 logs level and velocity readings. Use Greyline Logger software (included) to set the logging interval and to view real-time readings on your laptop or PC. Stingray's 2.0 built-in LCD display allows you to check level and velocity rates, remaining battery life and logger memory. The Stingray 2.0 will operate and datalog for extended time periods powered by four standard alkaline D cells. For example, it has a one-year battery life when logging at 5-minute intervals!

Sensor installation is easy—simply attach the included SS mounting bracket to your pipe or channel floor, and clip the sensor into place. Optional mounting bands are available (sold separately). They use expandable spring tension rather than bolting or screwing.

Greyline Windows® Logger Software

Each Stingray 2.0 includes powerful flow analysis and reporting software. Use it to set the logger interval; download log files; and view level, velocity and water temperature readings in real time. The Greyline Logger displays logged files and flow rates in graph and table formats. It generates flow reports including minimum, maximum and average flow, calculates flow totals, and converts between common measurement units. Reporting is easy with Greyline Logger. Export charts as image files and export data to use in spreadsheet or database programs.

Includes: sensor mounting bracket, batteries, software and cables.

DESCRIPTION	STOCK #	EACH
Stingray 2.0 Level Velocity Meter	26469	\$
Replacement Duracell® Coppertop Batteries, D, Pack of 4	28343	
Replacement Rayovac® Ultra Pro Alkaline Batteries, D, Pack of 12	13432	

Stainless Steel Sensor Mounting Bands (Adjustable Range ±1/2")

PIPE ID	STOCK #	EACH	PIPE ID	STOCK #	EACH
6"	71716	\$	16"	71722	\$
8"	71717		18"	71723	
10"	71718		20"	71724	
12"	71719		24"	71725	
14"	71720		30"	71726	
15"	71721		32 to 40"	71727	

Requires a minimum water level of 1". Minimum water level may be achieved by placing a small dam downstream of the sensor.

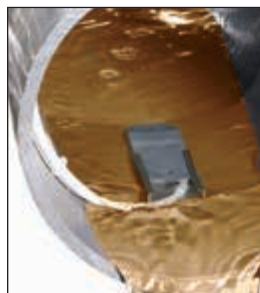
operator notes

Our skilled **in-house repair technicians** provide fast turnaround on both warranty and non-warranty repairs on a wide range of equipment.



Use for I & I studies, CSO, stormwater and flow surveys

Simple one-button operation



Easily logs level and velocity readings



SS Sensor Mounting Band 71716

Pipe size:	limited to head range
Velocity range:	0.1 to 12 ft/sec
Accuracy	
Level:	±0.25% of scale
Velocity:	±2% of reading
Display:	LCD
Min/max head:	1 inch to 15 feet
Setup interface:	via Greyline logger software for Windows
Output/communication:	USB (direct PC connection)
Data logger:	130,000-point, 10 sec to 60 min intervals retrieve, display, graph, store and export
Software:	
Operating conditions	
Electronics:	-4 to 140°F
Sensor:	5 to 150°F
Power:	four alkaline D-cell batteries
Cable:	25-ft 3-coaxial polyurethane jacket (optional 50 ft)
Enclosure:	watertight IP67 polycarbonate (when closed)
Dimensions	
Enclosure:	8.18"W x 3.44"H x 6.55"D
Sensor:	1.5"W x 0.63"H x 4.5"D
Weight:	10 lbs