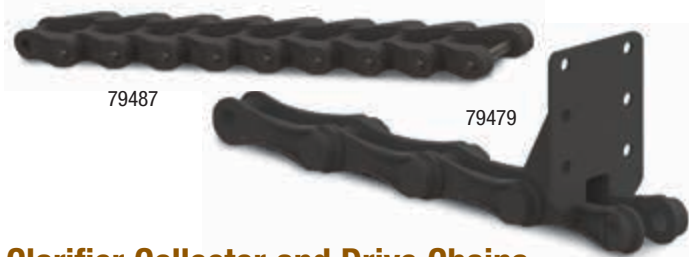


# PUMPS & PROCESS EQUIPMENT Clarifier Parts



## Clarifier Collector and Drive Chains

- Nonmetallic construction—ideal for use in harsh conditions

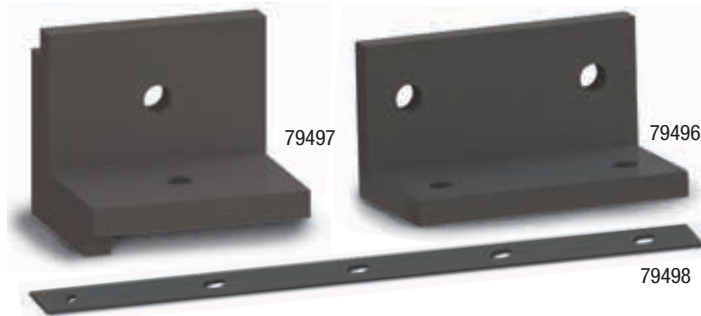
**NCS720S collector chains** feature glass-reinforced polyester construction for resistance against corrosion, elongation and wear. They're injection molded to keep the material free of air pockets for a strong uniform link. Unique pin design prevents rotation during service, and helps keep grit out.

Collector chains feature flight attachments made from the same material. Chains for longitudinal collectors include one attachment for connection every 10 feet (or every 20<sup>th</sup> pitch length). Chains for cross collectors include two attachments for connection every 5 feet (or every 10<sup>th</sup> pitch length). Choose F226 attachments for flights with 6" nominal height, or F228 attachments for flights with 8" nominal height.

**NH78 drive chains** are for use with rectangular clarifier power transmissions. Injection molded Nylon-6 construction has superior strength and corrosion resistance. Links are connected with SS pins rounded at both ends.

	Collector chain	Drive chain
<b>Pitch:</b>	6"	2.609"
<b>Links per 10 feet:</b>	20	46
<b>Weight per foot:</b>	1.5 lbs	1.5 lbs
<b>Average ultimate strength:</b>	6000 lbs	3100 lbs
<b>Working load:</b>	3100 lbs	1750 lbs
<b>Pin diameter:</b>	0.93"	0.38"
<b>Max allowable sprocket face:</b>	1.12"	0.94"

DESCRIPTION	ATTACHMENTS	STOCK #	EACH
<b>NCS720S COLLECTOR CHAINS</b>			
10' Chain for Longitudinal Collectors	(1) F226	<b>79479</b>	\$
10' Chain for Longitudinal Collectors	(1) F228	<b>79481</b>	
10' Chain for Cross Collectors	(2) F226	<b>79480</b>	
10' Chain for Cross Collectors	(2) F228	<b>79482</b>	
<b>NH78 DRIVE CHAINS</b>			
10' Drive Chain	—	<b>79487</b>	\$



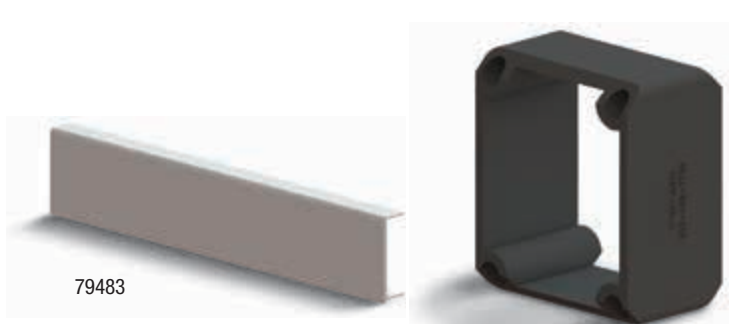
## Clarifier Wear Shoes and Strips

- Corrosion resistant UHMW-PE material

Wear shoes are reversible for extended life. Wear strips have a low coefficient of friction, allowing flights to run smoothly through your clarifier. They feature one hole to anchor the strip, and 3 or 4 slotted holes to allow for thermal expansion. Both feature UHMW-PE (ultra high molecular weight polyethylene) construction for maximum corrosion and abrasion resistance.

**Shipping:** Wear strip ships motor freight.

DESCRIPTION	THICKNESS	DIMENSIONS	STOCK #	EACH
Carry Shoe	1/2"	3"W x 3"H x 5 1/2"L	<b>79496</b>	\$
Return Shoe	1/2"	3"W x 3"H x 4 1/2"L	<b>79497</b>	
Wear Strip	3/8"	2 5/8"W x 120"L	<b>79498</b>	

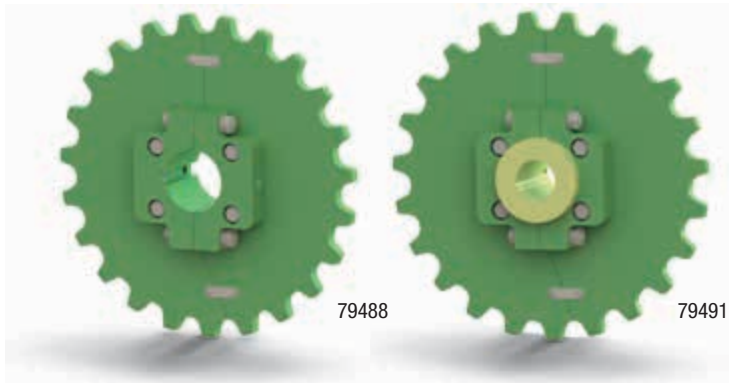


## Clarifier Flights

C-channel flights are constructed from isophthalic polyester resin, a lightweight alternative to traditional redwood. Scraping lip ensures optimized tank scraping. Filler blocks for 720 chain attachments act as spacers when attaching links to your flight. They're precision molded from sturdy wear-resistant polypropylene for proper alignment between flights and link attachments.

<b>Tensile strength</b>	
<b>Longitudinal:</b>	47,500 psi
<b>Transverse:</b>	7000 psi
<b>Flexural strength</b>	
<b>Longitudinal:</b>	40,000 psi
<b>Transverse:</b>	10,000 psi
<b>Shear strength by punch tool:</b>	14,000 psi
<b>Maximum flight density:</b>	0.062 to 0.070 lbs/in <sup>2</sup>

DESCRIPTION	STOCK #	EACH	FILLER BLOCK	
			STOCK #	EACH
C-Channel Flight, 3" x 6" Nominal	<b>79483</b>	\$	<b>79485</b>	\$
C-Channel Flight, 3" x 8" Nominal	<b>79484</b>		<b>79486</b>	



## Clarifier Drive and Idler Sprockets

- Corrosion-resistant UHMW material
- Hunting tooth design doubles sprocket life
- Split-apart design ensures easy installation and removal

Drive and idler shaft sprockets feature UHMW-PE (ultra high molecular weight polyethylene) construction for maximum corrosion and abrasion resistance. Their hunting tooth design features an odd number of teeth and half the chain pitch. This results in the chain touching every tooth after a total of two revolutions, rather than every revolution, thus doubling your sprocket's life. All sprockets have 23 teeth.

DESCRIPTION	BORE SIZE	STOCK #	EACH
Drive Shaft Sprocket w/ Keyway	3 7/16"	<b>79488</b>	\$
Drive Shaft Sprocket w/ Keyway	3 15/16"	<b>79489</b>	
Drive Shaft Sprocket w/ Keyway	4 7/16"	<b>79490</b>	
Idler Shaft Sprocket w/ Static Sleeve	1 15/16"	<b>79491</b>	
Idler Shaft Sprocket w/ Static Sleeve	2 7/16"	<b>79492</b>	
Idler Shaft Sprocket w/ Static Sleeve	2 15/16"	<b>79493</b>	
Idler Shaft Sprocket w/ Static Sleeve	3 7/16"	<b>79494</b>	
Idler Shaft Sprocket w/ Static Sleeve	3 15/16"	<b>79495</b>	