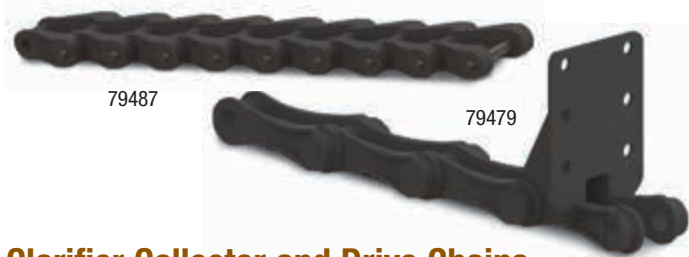


PUMPS & PROCESS EQUIPMENT Clarifier Parts



Clarifier Collector and Drive Chains

- Nonmetallic construction—ideal for use in harsh conditions

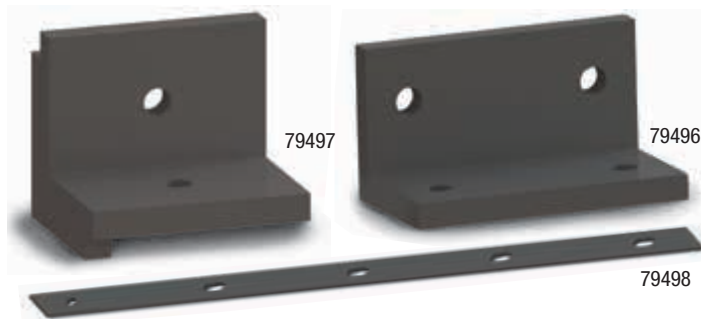
NCS720S collector chains feature glass-reinforced polyester construction for resistance against corrosion, elongation and wear. They're injection molded to keep the material free of air pockets for a strong uniform link. Unique pin design prevents rotation during service, and helps keep grit out.

Collector chains feature flight attachments made from the same material. Chains for longitudinal collectors include one attachment for connection every 10 feet (or every 20th pitch length). Chains for cross collectors include two attachments for connection every 5 feet (or every 10th pitch length). Choose F226 attachments for flights with 6" nominal height, or F228 attachments for flights with 8" nominal height.

NH78 drive chains are for use with rectangular clarifier power transmissions. Injection molded Nylon-6 construction has superior strength and corrosion resistance. Links are connected with SS pins rounded at both ends.

	Collector chain	Drive chain
Pitch:	6"	2.609"
Links per 10 feet:	20	46
Weight per foot:	1.5 lbs	1.5 lbs
Average ultimate strength:	6000 lbs	3100 lbs
Working load:	3100 lbs	1750 lbs
Pin diameter:	0.93"	0.38"
Max allowable sprocket face:	1.12"	0.94"

DESCRIPTION	ATTACHMENTS	STOCK #	EACH
NCS720S COLLECTOR CHAINS			
10' Chain for Longitudinal Collectors	(1) F226	79479	\$
10' Chain for Longitudinal Collectors	(1) F228	79481	
10' Chain for Cross Collectors	(2) F226	79480	
10' Chain for Cross Collectors	(2) F228	79482	
NH78 DRIVE CHAINS			
10' Drive Chain	—	79487	\$



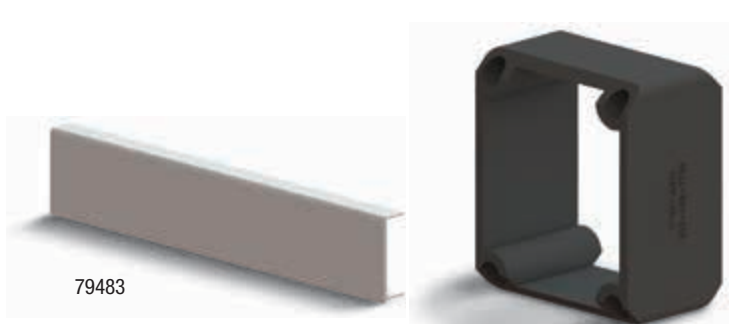
Clarifier Wear Shoes and Strips

- Corrosion resistant UHMW-PE material

Wear shoes are reversible for extended life. Wear strips have a low coefficient of friction, allowing flights to run smoothly through your clarifier. They feature one hole to anchor the strip, and 3 or 4 slotted holes to allow for thermal expansion. Both feature UHMW-PE (ultra high molecular weight polyethylene) construction for maximum corrosion and abrasion resistance.

Shipping: Wear strip ships motor freight.

DESCRIPTION	THICKNESS	DIMENSIONS	STOCK #	EACH
Carry Shoe	1/2"	3"W x 3"H x 5 1/2"L	79496	\$
Return Shoe	1/2"	3"W x 3"H x 4 1/2"L	79497	
Wear Strip	3/8"	2 5/8"W x 120"L	79498	

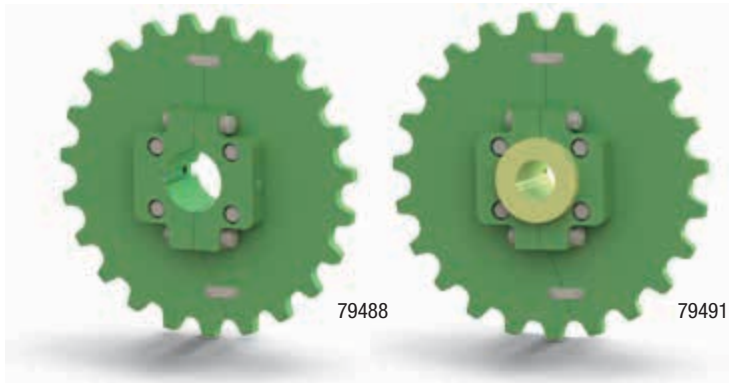


Clarifier Flights

C-channel flights are constructed from isophthalic polyester resin, a lightweight alternative to traditional redwood. Scraping lip ensures optimized tank scraping. Filler blocks for 720 chain attachments act as spacers when attaching links to your flight. They're precision molded from sturdy wear-resistant polypropylene for proper alignment between flights and link attachments.

Tensile strength	
Longitudinal:	47,500 psi
Transverse:	7000 psi
Flexural strength	
Longitudinal:	40,000 psi
Transverse:	10,000 psi
Shear strength by punch tool:	14,000 psi
Maximum flight density:	0.062 to 0.070 lbs/in ²

DESCRIPTION	STOCK #	EACH	FILLER BLOCK	
			STOCK #	EACH
C-Channel Flight, 3" x 6" Nominal	79483	\$	79485	\$
C-Channel Flight, 3" x 8" Nominal	79484		79486	



Clarifier Drive and Idler Sprockets

- Corrosion-resistant UHMW material
- Hunting tooth design doubles sprocket life
- Split-apart design ensures easy installation and removal

Drive and idler shaft sprockets feature UHMW-PE (ultra high molecular weight polyethylene) construction for maximum corrosion and abrasion resistance. Their hunting tooth design features an odd number of teeth and half the chain pitch. This results in the chain touching every tooth after a total of two revolutions, rather than every revolution, thus doubling your sprocket's life. All sprockets have 23 teeth.

DESCRIPTION	BORE SIZE	STOCK #	EACH
Drive Shaft Sprocket w/ Keyway	3 7/16"	79488	\$
Drive Shaft Sprocket w/ Keyway	3 15/16"	79489	
Drive Shaft Sprocket w/ Keyway	4 7/16"	79490	
Idler Shaft Sprocket w/ Static Sleeve	1 15/16"	79491	
Idler Shaft Sprocket w/ Static Sleeve	2 7/16"	79492	
Idler Shaft Sprocket w/ Static Sleeve	2 15/16"	79493	
Idler Shaft Sprocket w/ Static Sleeve	3 7/16"	79494	
Idler Shaft Sprocket w/ Static Sleeve	3 15/16"	79495	