



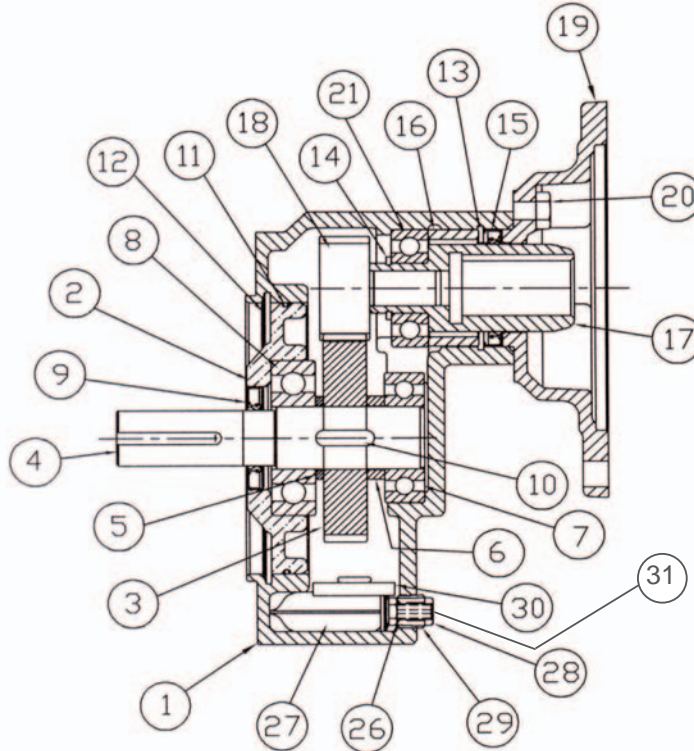
4310 N. 126th St., Brookfield, WI 53005 (USA)
 phone (262) 781-5020 ~ fax (262) 781-8120
 www.grovhac.com

2100-40-F & 2100-50-F

Parts Sheet

(Inline Gearbox 4:1, 5:1)

Date: 11/04



ITEM NO.	PART NO.	DESCRIPTION	QTY.	ITEM NO.	PART NO.	DESCRIPTION	QTY.
1	616-024	Housing	1	15	616-036	Seal, Input	1
2	616-025	Cover, Output	1	16	616-037	Spacer, Input	1
3	616-026	Gear, Output	1	17	616-038	Quill, Coupling	1
4	411-013	Output shaft	1	18	616-037	Pinion, Input	1
5	616-027	Spacer, Output	1	19	616-040	Flange, Quill Input	1
6	616-028	Spacer, Output	1	20	616-041	Screw, Input	1
7	616-029	Bearing, Output	1	21	616-042	Bearing, Input	1
8	616-030	Bearing, Output	1	26	616-043	O-ring, Int. Press. Comp.	1
9	616-031	Seal, Output	1	27	616-044	Int. Press Compensation	1
10	116-001	Key, Output	1	28	616-045	Nut, Int. Press. Comp.	1
11	616-032	O-ring, Output	1	29	616-046	Plug Stem	1
12	616-033	Snap Ring, Output	1	30	616-047	Splash Guard	1
13	616-034	Snap Ring, Input	1	31	616-015	Vent	1
14	616-035	Snap Ring, Input	1	32	110-181	Pipe Plug (Not Shown)	3

Lubrication Recommendations (oil capacity: 7/8 pint)

Manufacturer	Operating Conditions (15° - 60° F)	Operating Conditions (60° - 165° F)
AGMA Lubricant	#2	#4
Cities Service Co.	Pacemaker #68	CITGO EP Compo #150
Gulf Oil Co.	Harmony	EP Lubricant HD 150
Mobil Oil Corp.	Mobil DTE Heavy Med.	Mobil Gear 629
Shell Oil Corp.	Turbo 68	Omala 150
Sun Oil Corp.	Sunvis 931	Sunep 1060
Texaco, Inc.	Regal Oil PCR & O	Meropa #2

Please refer to model number for all correspondence.



⚠ WARNING ⚠

Read ALL instructions prior to operating reducer, injury to personnel or reducer failure may be caused by improper installation or operation. This reducer is not a fail-safe device or a self-locking device.

Rotating equipment is potentially dangerous and should be guarded at all times.

INSTALLATION

Your Grovhac speed reducer should be accurately aligned and bolted securely to a flat, level surface. Check output shafts to ensure proper tension and alignment of loads. Refer to factory for any non-standard mounting positions.

CAUTION

For safety, purchaser or user should provide protective guards over all shaft extensions and any moving apparatus mounted thereon. The user is responsible for checking all applicable safety codes in his/her area and providing suitable guards.

CAUTION

If the reducer is painted, extreme care should be taken to mask the shaft extensions and rubber seals. Paint on the shaft adjacent to the seal or on the seal lip will cause leakage.

SHEAVES and SPROCKETS

When mounting sheaves or sprockets, the center of the load should be located as close to the reducer as possible. Excessive overhung loading could result in early failures of bearing or shaft. Contact your Grovhac sales representative for information on overhung load ratings.

The system of connected rotating parts must be free from critical speed, torsional, or other type of vibration, regardless of how induced. The responsibility for this system analysis lies with the purchaser of the speed reducer.

“C” FLANGE—QUILL INPUT STYLE

Discard motor key. Use only special key provided with reducer.

Step #1: Position key in reducer input worm bore. Apply anti seize compound (packet shipped with reducer) to the motor shaft. Line up the key with the motor key slot and slip the motor shaft into the reducer worm bore.

Step #2: Tighten the supplied 4 bolts with lockwashers evenly for a solid fit between motor and “C” flange.

LUBRICATION

The Grovhac reducer is proper filled at the factory with sufficient lubricant for all mounting positions. The reducer may be mounted in any supplier approved mounting position without modification or changing oil level. To change the lubricant, remove the vent (#31, see parts list) from the gear housing. Drain the oil from the housing; this may be easier if the gear reducer is allowed to run for 5-10 minutes to warm the oil. Place reducer in a position where the drain hole is at the lowest point to allow all the oil to drain from the housing. Add 7/8 pint recommended oil (see parts list). Replace vent (#31) and tighten.

MAINTENANCE

Your Grovhac gear reducer has been tested and adjusted at the factory. Dismantling or replacement of components will void the warranty. All capacity ratings are based on American Gear Manufacturers Association (AGMA) standards.

Contact your Grovhac sales representative for warranty questions.